

上海开端进出口有限公司

CAIDON Import and Export Co., LTD

Bearing Catalog
产品目录

Sales@caidon.com

Tel: 0086-21-58220926

heyb@caidon.com

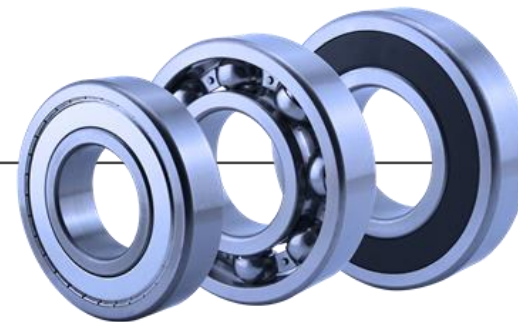
Tel: 0086-18621719126

www.caidon.com

CAIDON

1. DGBB – Deep Groove Ball Bearings

深沟球轴承



- Material: chrome steel, Stainless steel AISI 420, AISI 440;
- Noise level Z1, Z2, Z3, Z4;
- Precision level: P0 (ABEC 1), P6 (ABEC 3), P5 (ABEC 5);
- Inch size bearing;

	Inner diameter		Bearing No.	Bearing No.	Bearing No.	Bearing No.	Bearing No.	Bearing No.
	d							
	mm							
	10		6000 ZZ/2RS	6200 ZZ/2RS	6300 ZZ/2RS	6700 ZZ/2RS	6800 ZZ/2RS	6900 ZZ/2RS
	12		6001 ZZ/2RS	6201 ZZ/2RS	6301 ZZ/2RS	6701 ZZ/2RS	6801 ZZ/2RS	6901 ZZ/2RS
	15		6002 ZZ/2RS	6202 ZZ/2RS	6302 ZZ/2RS	6702 ZZ/2RS	6802 ZZ/2RS	6902 ZZ/2RS
	17		6003 ZZ/2RS	6203 ZZ/2RS	6303 ZZ/2RS	6703 ZZ/2RS	6803 ZZ/2RS	6903 ZZ/2RS
	20		6004 ZZ/2RS	6204 ZZ/2RS	6304 ZZ/2RS	6704 ZZ/2RS	6804 ZZ/2RS	6904 ZZ/2RS
	25		6005 ZZ/2RS	6205 ZZ/2RS	6305 ZZ/2RS	6705 ZZ/2RS	6805 ZZ/2RS	6905 ZZ/2RS
	30		6006 ZZ/2RS	6206 ZZ/2RS	6306 ZZ/2RS	6706 ZZ/2RS	6806 ZZ/2RS	6906 ZZ/2RS

Max	50		6710 ZZ/2RS
Max	300		6060 ZZ/2RS	6260 ZZ/2RS	6360 ZZ/2RS	
Max	400						6880 ZZ/2RS	...
Max	480							6996 ZZ/2RS

We can do customized bearing based on your sample or drawing.

2. Miniature Deep Groove Ball Bearings 微型深沟球轴承



➤ Chrome steel miniature DGBB;

Inner diameter	Bearing No.	Bearing No.	Bearing No.	Bearing No.	Bearing No.
d					
mm					
2				682 ZZ/2RS	692 ZZ/2RS
3	603 ZZ/2RS	623 ZZ/2RS		683 ZZ/2RS	693 ZZ/2RS
4	604 ZZ/2RS	624 ZZ/2RS	634 ZZ/2RS	684 ZZ/2RS	694 ZZ/2RS
5	605 ZZ/2RS	625 ZZ/2RS	635 ZZ/2RS	685 ZZ/2RS	695 ZZ/2RS
6	606 ZZ/2RS	626 ZZ/2RS	636 ZZ/2RS	686 ZZ/2RS	696 ZZ/2RS
7	607 ZZ/2RS	627 ZZ/2RS	637 ZZ/2RS	687 ZZ/2RS	697 ZZ/2RS
8	608 ZZ/2RS	628 ZZ/2RS	638 ZZ/2RS	688 ZZ/2RS	698 ZZ/2RS
9	609 ZZ/2RS	629 ZZ/2RS	639 ZZ/2RS	689 ZZ/2RS	699 ZZ/2RS

We can provide:

- Noise level Z2, Z3;
- Precision level: P0 (ABEC 1), P6 (ABEC 3), P5 (ABEC 5);
- Inch size bearing;

➤ Stainless steel miniature DGBB;

Inner diameter	Bearing No.	Bearing No.	Bearing No.	Bearing No.	Bearing No.
d					
mm					
2				SS 682 ZZ/2RS	SS 692 ZZ/2RS
3	SS 603 ZZ/2RS	SS 623 ZZ/2RS		SS 683 ZZ/2RS	SS 693 ZZ/2RS
4	SS 604 ZZ/2RS	SS 624 ZZ/2RS	SS 634 ZZ/2RS	SS 684 ZZ/2RS	SS 694 ZZ/2RS
5	SS 605 ZZ/2RS	SS 625 ZZ/2RS	SS 635 ZZ/2RS	SS 685 ZZ/2RS	SS 695 ZZ/2RS
6	SS 606 ZZ/2RS	SS 626 ZZ/2RS	SS 636 ZZ/2RS	SS 686 ZZ/2RS	SS 696 ZZ/2RS
7	SS 607 ZZ/2RS	SS 627 ZZ/2RS	SS 637 ZZ/2RS	SS 687 ZZ/2RS	SS 697 ZZ/2RS
8	SS 608 ZZ/2RS	SS 628 ZZ/2RS	SS 638 ZZ/2RS	SS 688 ZZ/2RS	SS 698 ZZ/2RS
9	SS 609 ZZ/2RS	SS 629 ZZ/2RS	SS 639 ZZ/2RS	SS 689 ZZ/2RS	SS 699 ZZ/2RS

We can provide:

- Stainless steel material: AISI 420, AISI 440;
- Noise level Z2;
- Precision level: P0 (ABEC 1), P6 (ABEC 3), P5 (ABEC 5);
- Inch size bearing;

We can do customized bearing based on your sample or drawing.

3. SRB – Spherical Roller Bearings

调心滚子轴承



	Inner diameter	Bearing No.	Bearing No.	Bearing No.	Bearing No.
	d	1	2	3	4 (With seal)
	mm				
	20	21304 CA/CC W33			
	25	21305 CA/CC W33	22205 CA/CC W33		
	30	21306 CA/CC W33	22206 CA/CC W33		BS 22206 2CS
	35	21307 CA/CC W33	22207 CA/CC W33		BS 22207 2CS
	40	21308 CA/CC W33	22208 CA/CC W33	22308 CA/CC W33	BS 22208 2CS
	45	21309 CA/CC W33	22209 CA/CC W33	22309 CA/CC W33	BS 22209 2CS

Max	150	21330 CA/CC W33	BS 22230 2CS
Max	300		22260 CA/CC W33	...	
Max	400		22280 CA/CC W33	...	
Max	450			22390 CA/CC W33	

We can provide:

- Precision level: P0 (ABEC 1), P6 (ABEC 3);
- SKF E type;
- FAG E1 type;
- NSK EAE4 type;

	Inner diameter	Bearing No.	Bearing No.	Bearing No.	Bearing No.	Bearing No.	Bearing No.	Bearing No.	Bearing No.	Bearing No.
	d	5	6	7	8	9	10	11	12	13
	mm									
	90			23218 CA/CC W33			24018 CA/CC W33			
	95			23219 CA/CC W33			24019 CA/CC W33			
	100		23120 CA/CC W33	23220 CA/CC W33			24020 CA/CC W33	24120 CA/CC W33		
	105		23121 CA/CC W33	23221 CA/CC W33			24021 CA/CC W33	24121 CA/CC W33		
	110	23022 CA/CC W33	23122 CA/CC W33	23222 CA/CC W33			24022 CA/CC W33	24122 CA/CC W33		
		
	150	23830 CA/CC W33	23930 CA/CC W33	24830 CA/CC W33	24930 CA/CC W33
Max	300	...	23160 CA/CC W33	23260 CA/CC W33	24060 CA/CC W33
Max	400
Max	450	23090 CA/CC W33		
Max	480					24196 CA/CC W33
Max	1000				238/1000 CA/CC W33	239/1000 CA/CC W33			248/1000 CA/CC W33	249/1000 CA/CC W33

We can do customized bearing based on your sample or drawing.

CAIDON

4. TRB – Tapered roller bearings

圆锥滚子轴承



	Inner diameter	Bearing No.	Bearing No.	Bearing No.	Bearing No.	Bearing No.	Bearing No.	Bearing No.	Bearing No.	Bearing No.
	d	1	2	3	4	5	6	7	8	9
	mm									
	15	30202								
	17	30203				32303				
	20	30204		32004		32304				
	25	30205	31305	32005	32205	32305				33205
	30	30206	31306	32006	32206	32306				33206
	35	30207	31307	32007	32207	32307				33207
	40			33108	33208
	45			33109	33209
	50		33010	33110	33210
	55		33011	33111	33211

Max	110	32922
Max	120	32324	32924	33024	33124	33224
Max	150	...	31330			
Max	300	30260		...	32260		...			
Max	320			32064			...			
Max	360						32972			

We can provide:

- Noise level Z2;
- Precision level: P0 (ABEC 1), P6 (ABEC 3), P5 (ABEC 5);
- Inch size Tapered Roller Bearing.



We can do customized bearing based on your sample or drawing.

CAIDON

5. CRB – Cylindrical roller bearings

圆柱滚子轴承



	Inner diameter	Bearing No.	Bearing No.	Bearing No.	Bearing No.	Bearing No.	Bearing No.	Bearing No.	Bearing No.
	d	1	2	3	4	5	6	7	8
	mm								
	15					NJ 202			
	17	N 203	N 303			NJ 203	NJ 2203		NJ 303
	20	N 204	N 304			NJ 204	NJ 2204		NJ 304
	25	N 205	N 305			NJ 205	NJ 2205	NJ 2305	NJ 305
	30	N 206	N 306	N 406		NJ 206	NJ 2206	NJ 2306	NJ 306
	35	N 207	N 307	N 407	NJ 1007	NJ 207	NJ 2207	NJ 2307	NJ 307

Max	110	N 222	...	N 422
Max	140	
Max	170		N 334					...	
Max	280					NJ 256	NJ 2256	NJ 2356	NJ 356
Max	320								
Max	380				NJ 1076				

We can provide:

- Noise level Z2;
- Precision level: P0 (ABEC 1), P6 (ABEC 3), P5 (ABEC 5);

	Inner diameter	Bearing No.	Bearing No.	Bearing No.	Bearing No.	Bearing No.	Bearing No.	Bearing No.	Bearing No.	Bearing No.
	d	9	10	11	12	13	14	15	16	17
	mm									
	15		NU 202							
	17		NU 203	NU 2203		NU 303	NUP 203	NUP 2203		
	20		NU 204	NU 2204		NU 304	NUP 204	NUP 2204		NUP 304
	25	NU 1005	NU 205	NU 2205	NU 2305	NU 305	NUP 205	NUP 2205	NUP 2305	NUP 305
	30	NU 1006	NU 206	NU 2206	NU 2306	NU 306	NUP 206	NUP 2206	NUP 2306	NUP 306
	35	NU 1007	NU 207	NU 2207	NU 2307	NU 307	NUP 207	NUP 2207	NUP 2307	NUP 307

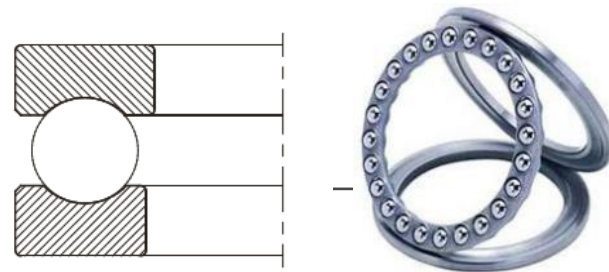
Max	110
Max	140	NUP 328
Max	170									
Max	280			NU 2256	NU 2356	NU 356	NUP 256	NUP 2256	NUP 2356	
Max	320		NU 264							
Max	380									
Max	480	NU 1096		NU 2296						

We can do customized bearing based on your sample or drawing.



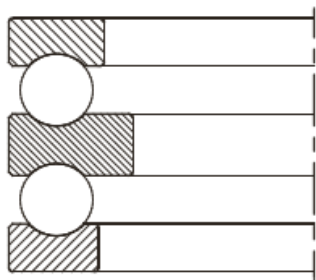
6. Thrust ball bearings

推力球轴承



	Inner diameter	Bearing No. 1	Bearing No. 2	Bearing No. 3	Bearing No. 4	Bearing No. 5	Bearing No. 6	Bearing No. 7	Bearing No. 8	Bearing No. 9	Bearing No. 10
	d mm										
	10	51100	51200								
	12	51101	51201			53201					
	15	51102	51202			53202			52202		
	17	51103	51203			53203			52203		
	20	51104	51204			53204			52204		
	25	51105	51205	51305	51405	53205			52205	52305	52405
	30	51106	51206	51306	51406	53206	53306		52206		
	35	51107	51207	51307	51407	53207	53307		52207		
	40	51108	51208	51308	51408	53208	53308	53408	52208		

Max	120					53224	53324	53424	52224	52324	52424
Max	200	51340	51440						
Max	400	51180	51280								



We can do customized bearing based on your sample or drawing.

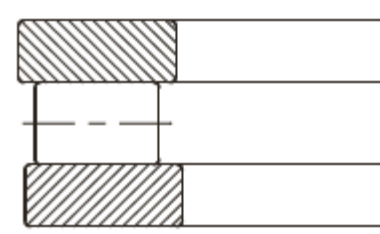
7. Thrust roller bearings

推力滚子轴承



	Inner diameter	Bearing No.	Bearing No.	Bearing No.	Bearing No.
	d	1	2	3	4
	mm				
	15	81102			
	17	81103			
	20	81104			
	25	81105			
	30	81106	81206	89306	
	35	81107	81207	89307	
	40	81108	81208	89308	
	
	89412

Max	150	89330	
Max	200		89440
Max	360	81172	81272		



We can do customized bearing based on your sample or drawing.

8. Spherical plain bearings

关节轴承



常州科达轴承有限公司
15805883336.1688.com

#	Bearing type	Bearing No. (for exsample)	Inner diameter Range (mm)
1	Spherical plain bearings	GE .. AX	10~200
2	Spherical plain bearings	GE .. AW	10~200
3	Spherical plain bearings	GE .. DO	10~1000
4	Spherical plain bearings	GE .. FO	20~280
5	Spherical plain bearings	GE .. FW 2RS	15~280
6	Spherical plain bearings	GE .. HO 2RS	12~80
7	Spherical plain bearings	GE .. LO	20~320
8	Spherical plain bearings	GE .. SX	25~200
9	Spherical plain bearings	GE .. SW	25~200
10	Spherical plain bearings	GE .. UK	10~30
11	Spherical plain bearings	GE .. UK 2RS	15~280
12	Spherical plain bearings	GE .. XF/Q	100~300
13	Spherical plain bearings	GEBK .. S	10~30
14	Spherical plain bearings	GEC .. XF/Q	320~460
15	Spherical plain bearings	GEH .. XF/Q	100~420



We can do customized bearing based on your sample or drawing.

CAIDON

9. Rod end 杆端轴承



#	Bearing type	Bearing No. (for exsample)	Inner diameter Range (mm)
1	Rod end	GIR .. DO	5~80
2	Rod end	GAR .. DO	5~80
3	Rod end	GIKR .. PB	5~30
4	Rod end	GAKR .. PB	5~30
5	Rod end	GIR .. UK	5~80
6	Rod end	GAR .. UK	5~80
7	Rod end	GIKR .. PW	5~50
8	Rod end	GAKR .. PW	5~50
9	Rod end	GIHR K .. DO	20~160
10	Rod end	GIHN K .. LO	12~250
11	Rod end	GF .. DO	20~120
12	Rod end	GF .. LO	20~120
13	Rod end	GK .. DO	10~80



We can do customized bearing based on your sample or drawing.

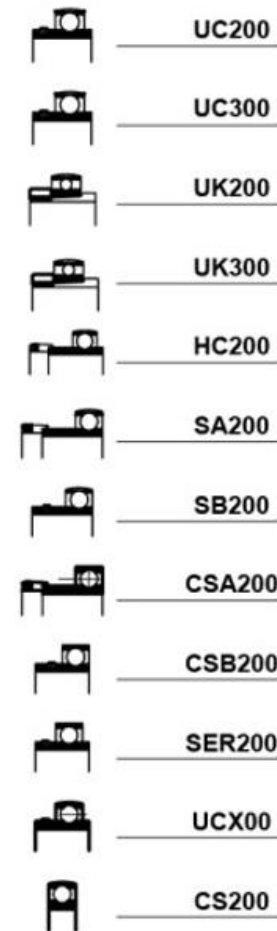
10. Insert bearings

外球面轴承



Insert Bearings

	Inner diameter	Bearing No. 1	Bearing No. 2	Bearing No. 3	Bearing No. 4	Bearing No. 5
	d mm					
	12	UB 201		UC 201		
	15	UB 202		UC 202		
	17	UB 203		UC 203		
	20	UB 204		UC 204		EN 204
	25	UB 205	UB 305	UC 205	UC 305	EN 205
	30	UB 206	UB 306	UC 206	UC 306	EN 206
	35	UB 207	UB 307	UC 207	UC 307	EN 207
	40	EN 208
	45	EN 209
	50	EN 210
	
Max	140	UB 228	UB 328	UC 228	UC 328	



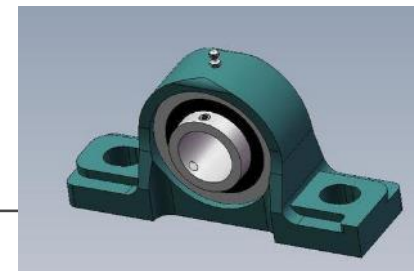
- Material: Chrome steel, Stainless steel AISI 420, AISI 440;
- Noise level Z2;



We can do customized bearing based on your sample or drawing.

11. Pillow block unit

带座轴承单元



#	Bearing type	Bearing No. 1 (for exsample)	Bearing No. 2 (for exsample)	Bearing No. 3 (for exsample)	Bearing No. 4 (for exsample)
1	Pillow block unit	UCF xxx	UBF xxx	ENF xxx	EWf xxx
2	Pillow block unit	UCFA xxx			
3	Pillow block unit	UCFC xxx			
4	Pillow block unit	UCFL xxx	UBFL xxx	ENFL xxx	EWFL xxx
5	Pillow block unit	UCFS xxx			
6	Pillow block unit	UCFW xxx			
7	Pillow block unit	UCHA xxx			
8	Pillow block unit	UCP xxx	UBP xxx	ENP xxx	EWp xxx
9	Pillow block unit	UCPA xxx			
10	Pillow block unit	UCPF xxx	UBPF xxx	ENPF xxx	EWPF xxx
11	Pillow block unit	UCPFD xxx	UBPFD xxx	ENPFD xxx	EWPFd xxx
12	Pillow block unit	UCPFL xxx	UBPFL xxx	ENPFL xxx	EWPFfL xxx
13	Pillow block unit	UCPG xxx			
14	Pillow block unit	UCPH xxx			
15	Pillow block unit	UCPP xxx	UBPP xxx	ENPP xxx	EWPP xxx
16	Pillow block unit	UCT xxx			

- Housing material: Cast iron, Stainless steel AISI 420, AISI 440;
- Noise level Z2;



Insert Bearings

- UC200
- UC300
- UK200
- UK300
- HC200
- SA200
- SB200
- CSA200
- CSB200
- SER200
- UCX00
- CS200

Flanged Units Type

- HCP200
- SAP200
- UCPA200
- UCPH200
- UCF200
- UCF300
- UKF200
- UKF300
- SAF200
- HCF200
- UCFL200
- UCFL300
- UKFL200
- HCFL200

Take up Units Type

- UCT200

Flanged Cartridge Units Type

- UCT300
- HCT200
- UKT200
- UCFC200
- UKFC200
- HCFC200

Other Units Types

- UCHA200
- UCFA200
- UCFB200
- UCC200

We can do customized bearing based on your sample or drawing.

12. Plummer block housing

剖分轴承座



	Inner diameter	Bearing No. 1	Bearing No. 2	Bearing No. 3	Bearing No. 4	Bearing No. 5	Bearing No. 6	Bearing No. 7
	d mm							
	25	SN 505	SN 605	SNL 605	SNU 605	TSN 205	TSN 305	TSN 505
	30	SN 506	SN 606	SNL 606	SNU 606	TSN 206	TSN 306	TSN 506
	35	SN 507	SN 607	SNL 607	SNU 607	TSN 207	TSN 307	TSN 507
	40	SN 508	SN 608	SNL 608	SNU 608	TSN 208	TSN 308	TSN 508

Max	160	SN 532	SN 632	SNL 632	SNU 632	TSN 232	TSN 332	TSN 532



SNL500 Series



SNL3100 Series



FCM500 Series

We can do customized bearing based on your sample or drawing.

13. Self aligning ball bearings

调心球轴承



	Inner diameter	Bearing No. 1	Bearing No. 2	Bearing No. 3	Bearing No. 4
	d				
	mm				
	10	1200		2200	
	12	1201	1301	2201	2301
	15	1202	1302	2202	2302
	17	1203	1303	2203	2303
	20	1204	1304	2204	2304

Max	120	1224	1324	2224	2324



We can do customized bearing based on your sample or drawing.

14. Needle roller bearings

滚针轴承



#	Bearing type	Bearing No. (for exsample)
1	NRB - Needle roller bearings	RNA 48xx
2	NRB - Needle roller bearings	RNA 49xx
3	NRB - Needle roller bearings	RNA 69xx
4	NRB - Needle roller bearings	RNAO100X120X30
5	NRB - Needle roller bearings	NA 48/xx
6	NRB - Needle roller bearings	NA 49/xx
7	NRB - Needle roller bearings	NA 69/xx
8	NRB - Needle roller bearings	NAO12X24X13
9	NRB - Needle roller bearings	NK xx/xx
10	NRB - Needle roller bearings	NKI xx/xx
11	NRB - Aligning needle roller bearings	NKIA 59/xx
12	NRB - Aligning needle roller bearings	NKIB 59/xx
13	NRB - Needle roller bearings	NKIS xx
14	NRB - Needle roller bearings	NKS xx
15	NRB - Axial ball bearings	NKX xx
16	NRB - Axial ball bearings	NX xx
17	NRB - Aligning needle roller bearings	PNA xx/xx
18	NRB - Aligning needle roller bearings	RPNA xx/xx
19	NRB - Drawn cup needle roller bearings with closed end	BK xxxx
20	NRB - Drawn cup needle roller bearings with open end	HK xxxx
21	NRB - Drawn cup needle roller bearings with open end	HN xxxx
22	NRB - Needle roller and cage assemblies	K 100X107X21
23	NRB - Inner rings	IR 100X110X30
24	NRB - Inner rings	LR 10X13X12
25	Axial needle roller and cage assemblies	AXK xxxx
26	Axial needle roller bearings	AXW xx
27	Axial bearing washers	AS xxxx
28	Bearing washers	LS xxxx



We can do customized bearing based on your sample or drawing.

15. Track rollers

滚轮



#	Bearing type	Bearing No. (for exsample)
1	Yoke type track rollers	NATR xx
2	Yoke type track rollers	NA 22/xx
3	Yoke type track rollers	NATV xx
4	Yoke type track rollers	NUTR xx
5	Yoke type track rollers	NNTR 100X240X105
6	Yoke type track rollers	PWTR xx
7	Yoke type track rollers	STO xx
8	Stud type track rollers	KR xx
9	Stud type track rollers	KRE xx
10	Stud type track rollers	KRV xx
11	Stud type track rollers	NUKR xx
12	Stud type track rollers	NUKRE xx
13	Stud type track rollers	PWKR xx
14	Stud type track rollers	PWKRE xx



We can do customized bearing based on your sample or drawing.

16. Axial spherical roller bearings 调心推力滚子轴承



	Inner diameter	Bearing No. 1	Bearing No. 2	Bearing No. 3
	d			
	mm	1	2	3
	60	29412		
	65	29413		
	70	29414		
	75	29415		
	80	29416		
	85	29417	29317	
	90	29418	29318	
	
	29230

Max	480	29496	29396	29296

We can do customized bearing based on your sample or drawing.

17. Linear ball bushing

直线轴承

#	Bearing type	Bearing No. (for exsample)	Inner diameter Range (mm)
1	Linear ball bushing	KH ..	5~60
2	Linear ball bushing	LM .. UU	5~60
3	Linear ball bushing	LM .. UUAJ	5~60
4	Linear ball bushing	LMB .. UU	5~60
5	Linear ball bushing	LME .. LUU	5~60
6	Linear ball bushing	LMF .. LUU	5~60
7	Linear ball bushing	ST .. UU	5~60
8	Linear ball bushing	SC .. UU	5~60
9	Linear ball bushing	SCE .. UU	5~60
10	Linear ball bushing	SCJ .. UU	5~60



We can do customized bearing based on your sample or drawing.

18. ACB – Angular contact ball bearings

角接触轴承

	Contact angle	AC (25°)	A (30°)	B (40°)
#	Bearing type	Bearing No. 1 (for exsample)	Bearing No. 2 (for exsample)	Bearing No. 3 (for exsample)
1	ACB - Angular contact ball bearing	70xx AC	70xx A	70xx B
2	ACB - Angular contact ball bearing	72xx AC	72xx A	72xx B
3	ACB - Angular contact ball bearing	73xx AC	73xx A	73xx B

#	Bearing type	Bearing No. 1 (for exsample)	Remark
1	Four point contact ball bearing	QJ 2xx	Separated inner ring
2	Four point contact ball bearing	QJ 3xx	Separated inner ring
3	Four point contact ball bearing	Q 2xx	Separated outer ring
4	Four point contact ball bearing	Q 3xx	Separated outer ring

#	Bearing type	Bearing No. 1 (for exsample)
1	ACB - Angular contact ball bearing - double rows	32xx
2	ACB - Angular contact ball bearing - double rows	33xx



We can do customized bearing based on your sample or drawing.

19. Adapter sleeve, Nut and Fix ring 紧定套、螺母和固定环



❖ Adapter sleeve :

- Types:
 - H 2... ; H 3 ... ;
 - OH ... ;
 - AHX 3... ;



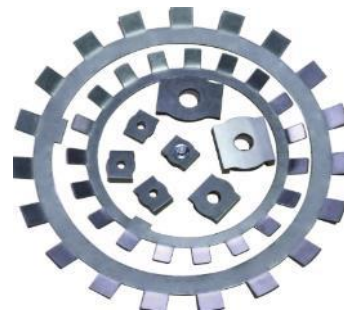
❖ Nut:

- Material: Chrome steel, Stainless steel;
- Types:
 - KM .. ; KMK .. ; HM ... ;
 - KMT .. ; KMTA ... ; KMD ... ;
 - SS KM ..;



❖ Fix ring:

- Types:
 - MB .. ; SS MB.. ;
 - FRB ... ;



We can do customized bearing based on your sample or drawing.

20. Stainless steel bearings 不锈钢轴承



❖ Stainless steel bearing:

- DGBB – such as: S 6204 2RS;
- DGBB – miniature bearing, such as: S 626 2RS;
- TRB – such as: S 30204;
- Double row angular contact bearing – such as: S 3201 2RS TN;
- Pillow block unit – such as: S UCP 204;
- Self aligning ball bearing – such as: S 2200 2RS TN;
- Thrust ball bearing – such as: S 51102;

❖ Stainless steel material:

- AISI 420;
- AISI 440;
- AISI 304;
- AISI 316;

❖ With food level grease:

- Mobil FM222;
- ...



We can do customized bearing based on your sample or drawing.

21. Ceramic bearing 陶瓷轴承

- ❖ Ceramic bearing – material ZrO_2 , Si_3N_4 or SiC , such as: 6006 ZR PEEK;



We can do customized bearing based on your sample or drawing.

21. Plastic bearings 塑料轴承

- ❖ Plastic bearing – such as: 608 plastic with glass ball;



We can do customized bearing based on your sample or drawing.

21. Thin section bearing (Kaydon type) 等截面轴承

- ❖ Thin section bearing (Kaydon type) – such as: KD250EP0;



We can do customized bearing based on your sample or drawing.

21. Bearing with solid oil 固体油润滑轴承

- ❖ DGBB/CRB/TRB/Insert bearing with solid oil – such as: 6205 2RS solid oil;



We can do customized bearing based on your sample or drawing.

Create high value add for you !



Shanghai CAIDON Import and Export Co., LTD

Sales@caidon.com

Tel: 0086-21-58220926

heyb@caidon.com

Tel: 0086-21-50880251

www.caidon.com

Address:

Building 11, No.66, Lane
88, West Heli Road,
Shanghai, China

